

MONTHLY MEMBERSHIP PROGRESS REPORT

LOCATION NORTH DAKOTA

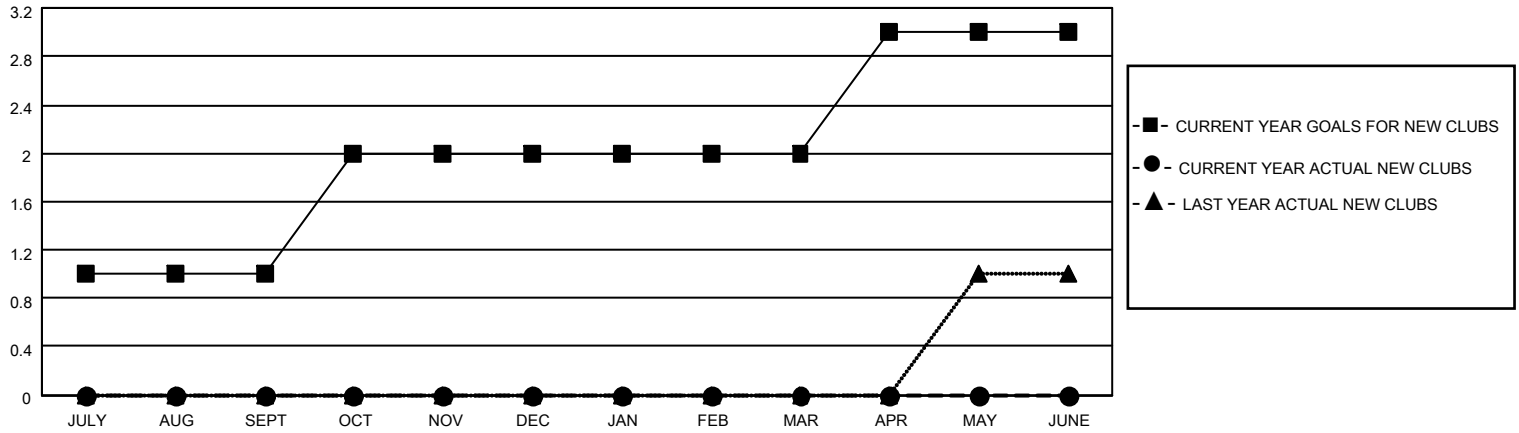
District 5 NW

Results as of: 2/28/2022

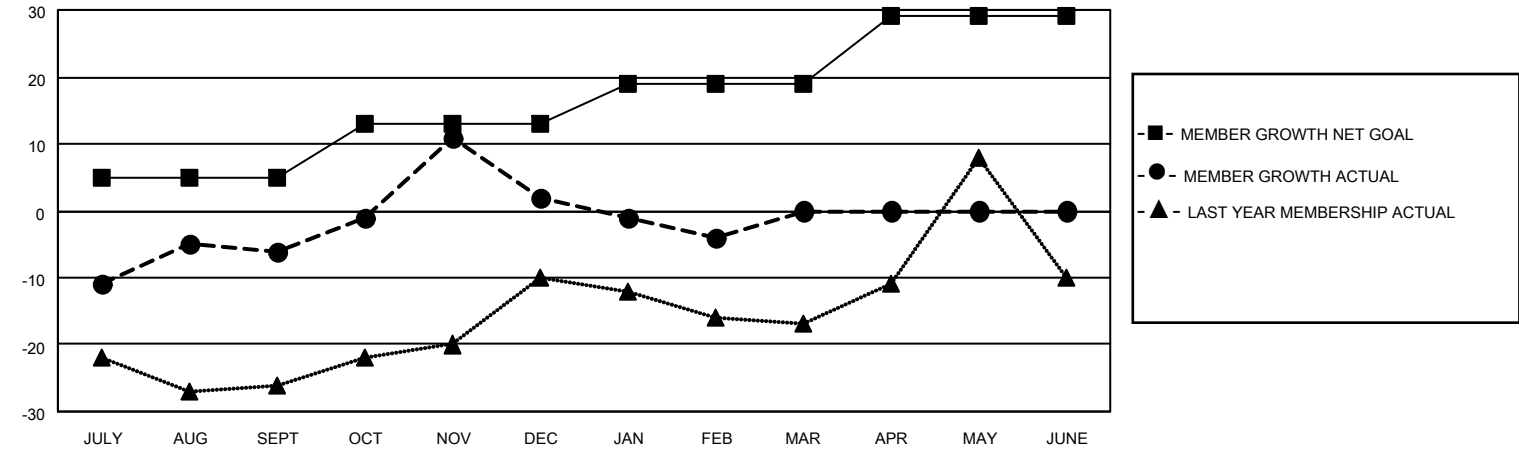
Clubs			
RESULTS FOR 2021-2022			
QUARTER	NEW CLUB GOAL	NEW CLUBS	DROPPED CLUBS
JULY/AUG/SEPT	1	0	0
OCT/NOV/DEC	1	0	1
JAN/FEB/MAR	0	0	0
APR/MAY/JUNE	1	0	0

Members			
RESULTS FOR 2021-2022			
QUARTER	MEMBER GROWTH NET GOAL	MEMBER GROWTH ACTUAL	DROPPED MEMBERS ACTUAL (including transfers)
JULY/AUG/SEPT	5	22	28
OCT/NOV/DEC	8	36	23
JAN/FEB/MAR	6	10	15
APR/MAY/JUNE	10	0	0

GOALS AND ACTUAL NEW CLUBS CUMULATIVE



GOALS AND ACTUAL MEMBERS CUMULATIVE



DROPPED CLUBS: 1

19 CLUBS OF 43 ADDED 1 OR MORE NEW MEMBERS

GENDER DISTRIBUTION

MALE	693 (62.04%)
FEMALE	424 (37.96%)
NON BINARY	0 (0.00%)
PREFER NOT TO ANSWER	0 (0.00%)

DROPPED MEMBERS

[CLICK HERE FOR CUMULATIVE MEMBERSHIP DATA](#)

DECEASED	11
CLUB CANCELLED	0
OTHER	55
TOTAL	66

TOTAL FAMILY UNIT MEMBERS 212

FAMILY MEMBERS PAYING HALF DUES 107